



Leadership  
Network



Lancaster University  
MANAGEMENT SCHOOL

# REINVENTING LEADERSHIP DEVELOPMENT

## Creating Lasting Impact in Organisations

A Summit with Henry Mintzberg and John Burgoyne



Ockenden Manor, West Sussex | November 18<sup>th</sup>-19<sup>th</sup> 2010

**Lancaster University Management School and IEDP are pleased to invite you to a unique leadership summit, with Henry Mintzberg and John Burgoyne, held in the Sussex countryside.**

The summit is a highly participative, focused, and invitation-only event limited to approximately 18 senior delegates. Delegates are expected to be Heads of Leadership, Talent and Management Development, Heads of OD, and similar roles.

The summit will feature live case studies from Lufthansa and Novartis and the chance to discuss challenges and experiences from your own organisation with the faculty and delegates.

There will be keynote interventions and discussion led by Henry Mintzberg (joining the summit by video link) and John Burgoyne on creating lasting organisational impact.

You will also have the opportunity to road test your organisation's leadership and talent development strategy with peers, leading practitioners and thought leaders, using the "friendly consulting" approach pioneered on the Global Advanced Leadership Program by Lancaster and McGill business schools.



**An unmatched opportunity to:**

- ✓ Engage with your peers in an interactive debate on how leadership development can create greater impact in organisations
- ✓ Benefit from active consultation on your leadership development strategy
- ✓ Participate in an on-going online forum after the event

## Summit Convenors and Keynote Contributors



**John Burgoyne** is Professor of Management Learning at Lancaster University Management School.

He has been at the forefront of thinking, researching and writing about leadership, management and organisation development, organisational learning, and the evaluation of initiatives in these areas for many years. His research has encompassed action learning, competency frameworks and corporate management development, and he is an advisor to government on these issues. He is currently particularly interested in the application of network theory to all the above areas.

In his sessions on this conference he will lead a discussion on 'How to Create Organisational Impact Through Executive Education'. He will also convene a discussion of how to put some of these ideas into practice alongside those suggested by Henry Mintzberg.



**Henry Mintzberg** is Cleghorn Professor of Management Studies at the Desautels Faculty of Management at McGill University in Montreal.

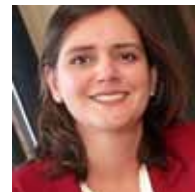
In addition to his renowned research and writing into managerial work, strategy formation, and forms of organizing, he has worked for much of the past decade, in collaboration with colleagues from McGill, Lancaster, IIMB, and elsewhere to develop new approaches to management education and development. These are the IMPM; the GALP; the International Masters for Health Leadership; and most recently CoachingOurselves.com, an online management development company that supports managers developing themselves in small groups in the workplace.



**Rick Crawley** is a Professorial Fellow at Lancaster University Management School, and Programme Director of the International Masters in Practicing Management (IMPM) and Global Advanced Leadership Programme (GALP) on behalf of Lancaster and McGill Universities, working in partnership with the Indian Institute of Management in Bangalore, Renmin University School of Business in Beijing, and FGV/EBAPE in Rio de Janeiro. Previously Rick worked at Lancaster on customised executive MBA programmes for British Airways and VSEL (now part of BAE Systems), after experience as a CEO, advisor on national training policy, and in retail management.



**Steve Mostyn** founded Steve Mostyn Associates in 2009 to focus on innovating in how organisations and business schools develop leaders. Previously Steve was Head of Executive Development for the RBS Business School and, before that, for Motorola University. Throughout his corporate career he has led the development of innovative leadership development programmes, working with many of the world's leading business schools in the US and Europe to engage leaders working together on real issues. Steve Mostyn is an Honorary Leadership Fellow at Lancaster University Management School, and adjunct Programme Director of Gary Hamel's MLab Consortium, based at London Business School.



**Estelle Métayer's** vast experience of and intuitive research into the ever-changing world of Competitive and Strategic Intelligence provides managers, CEOs, and board members with the right tools - to avoid blind spots, capitalize on strengths and excel. An adjunct professor at McGill University in Canada, she is also a guest lecturer at IMD in Switzerland. A former consultant at McKinsey & Company, Estelle was President and founder of Competia, a leading training organization for executives and analysts in Strategic Intelligence. Estelle is also a mother, a pilot, and flight instructor.

## Event Details

**Venue:** Ockenden Manor, Ockenden Lane, Cuckfield, West Sussex, RH17 5LD

**Date:** November 18th until November 19th 2010

(The programme starts at 12:00 on Thursday and ends at 15:30 on Friday)

**Investment:** £1,950 +VAT (includes overnight accommodation and meals)

## Getting here

### By road

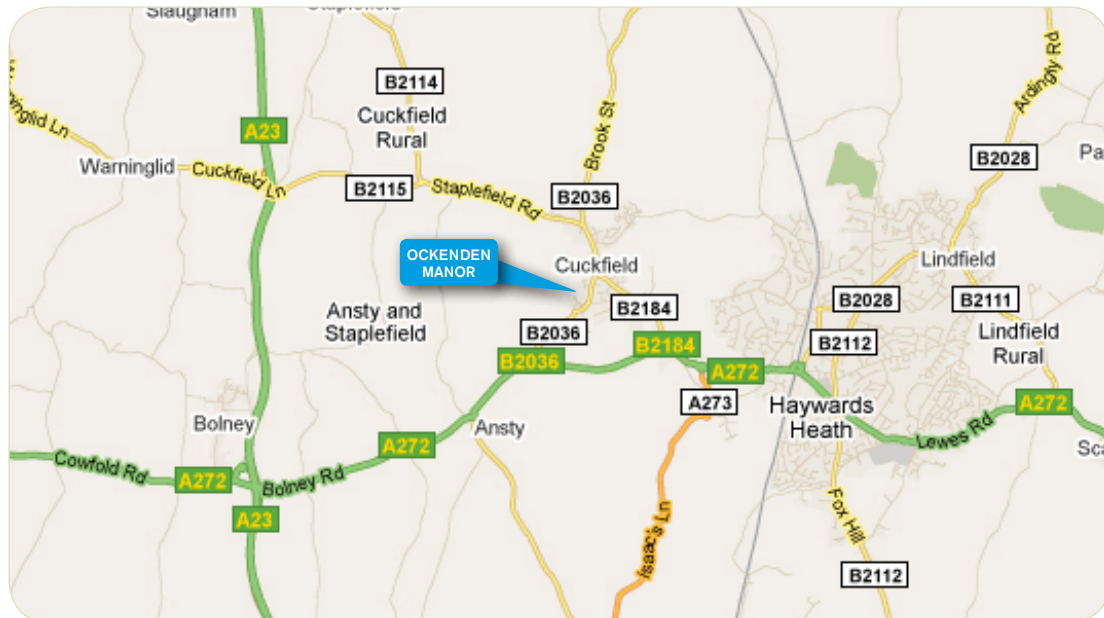
From north (London Gatwick) follow the M23/A23 south towards Brighton. Exit A23 on to A272 towards Haywards Heath.

Follow A272 until signposted Cuckfield. Follow road into centre of Cuckfield Village and follow signs to Hotel in Ockenden Lane.

### By rail

From London Victoria to Haywards Heath takes around 45 minutes with a further 10 minute taxi ride to the hotel.

Gatwick 12 miles (20 Minutes) Heathrow 45 miles (60 Minutes) Central London 50 miles (60 Minutes) M25 20 miles (30 Minutes)



## RESERVE YOUR PLACE

To reserve your place or for more information, please contact: **Jane Haughton**

Tel +44 (0)1524 510735

email [jane.haughton@lancaster.ac.uk](mailto:jane.haughton@lancaster.ac.uk)

